



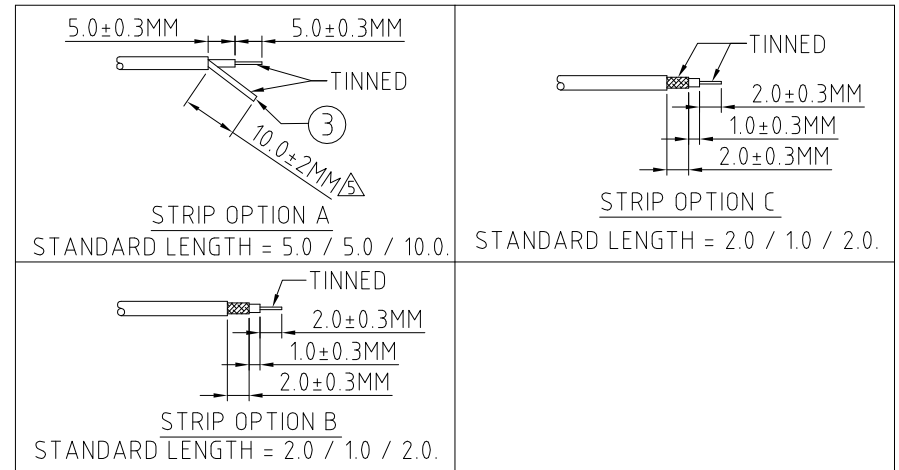
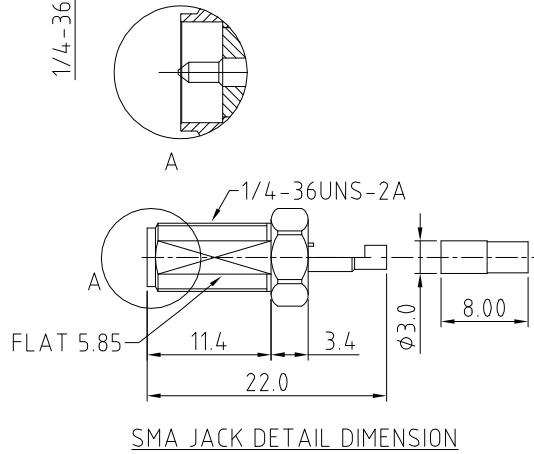
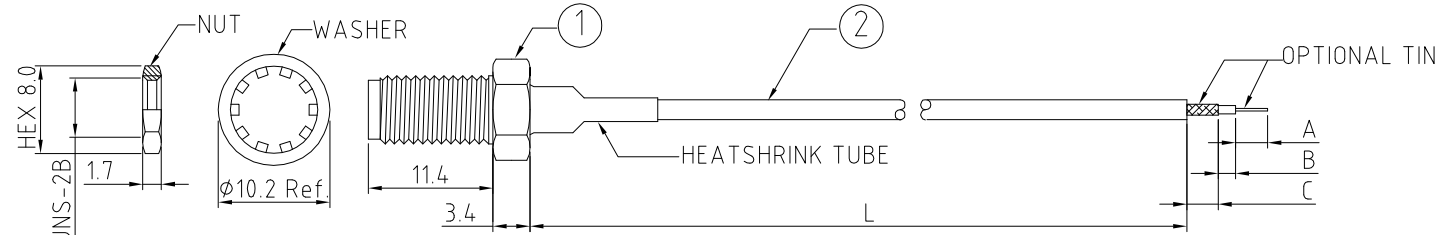
CAB055RF: RF CABLE ASSEMBLY, RP SMA BULKHEAD JACK + RG178 CABLE + STRIP / TIN

SPECIFICATIONS :

1. RP SMA ST BULKHEAD JACK, GOLD
FOR RG178 & $\phi 1.13$ CABLE: P/N: C20ABWS178003B
2. COAXIAL CABLE, SEE P/N FOR DETAIL.
3. TWISTED BRAID OR FLEXIBLE COPPER WIRE, LENGTH =
A (CENTRE CONDUCTOR) + B (INSULATOR). MIN. = 6.0MM.
LENGTH 6.0MM - 9.9MM: TWISTED BRAID.
LENGTH +10MM: FLEXIBLE COPPER WIRE.

NOTES:

1. STRIP DIMENSION A / B / C STANDS FOR
A = CENTRE CONDUCTOR
B = INSULATOR
C = BRAID.
2. INSERTION LOSS TEST REPORT IS NOT AVAILABLE.
3. THIS IS OUR STANDARD OFFERING, SPECIAL DESIGNS ARE
AVAILABLE, INCLUDING CUSTOM TOLERANCES AND SPECIAL
BRAID TINNING DESIGNS. PLEASE CONTACT GRADCONN FOR MORE
INFORMATION.
4. CENTRE CONDUCTOR AND TWISTED BRAID OF COAX CABLE IS
TINNED. WHEN BRAID LENGTH EXCEEDS 10MM LENGTH OF TINNED
COPPER WIRE IS SOLDERED TO THE BRAID/SHIELD OF THE COAX
CABLE WHICH ALLOWS SOLDERING TO PCB.



HOW TO ORDER

CAB055RF - X X X X - X.X / X.X / X.X - X - X X

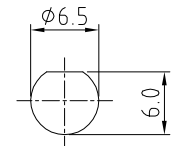
A/B/C STRIP DIMENSION IN MM:
FOR STANDARD LENGTH PLEASE REFER
TO DRAWINGS.
(SPECIALS AVAILABLE UPON REQUEST.)

"L" LENGTH IN MM:
eg: 100MM = 0100
(MIN. = 0050, MAX. = 2000
STANDARD = 0100, 0150, 0200)
Tolerance: <50mm : ± 2 mm.
51-200mm: ± 5 mm.
201-500mm: ± 7 mm.
>501mm: ± 10 mm.

CABLE SIZE OPTIONS:
BLANK = RG178 CABLE, COLOR: BROWN
 $\Delta 1 = \phi 1.13$ MM CABLE, COLOR: BLACK

WASHER AND NUT OPTIONS:
BLANK = SEPERATELY PACKED (STANDARD)
A = ASSEMBLED WITH CONNECTOR

STRIP AND TIN OPTIONS:
A = CENTER CONDUCTOR & TWISTED BRAID/SOLDERED COPPER
WIRE TINNED (SEE NOTE 4 FOR SOLDER TO PCB APPLICATION)
B = STRIPPED, END A TINNED
C = STRIPPED, END A & C TINNED



RECOMMENDED SMA MOUNTING HOLE

10	16/11/08 - NYW RELEASE
11	29/09/09 - YC REVISED TO GENERIC DRAWING RELEASE
12	08/10/09 - NYW CHANGE TWISTED BRAID TO SOLDERED COPPER WIRE. ADD SPECIFICATION OF COMPONENT 3. ADD NOTES 4. ADD WASHER & NUT OPTION.
13	03/11/09 - NYW ADD STRIP OPTIONS B, C.
14	26/11/09 - NYW ADD 1 DECIMAL PLACE TO STRIP DIMENSIONS. CHANGE P/N TO CAB055RF. ADD NOTE 4. REF.
15	11/07/11 - NYW AMEND TOLERANCE
16	17/02/12 - NYW ADD CABLE SIZE OPTION 1.
17	03/05/12 - NYW REMOVE STRIP OPTION 'D'. AMEND STRIP OPTION 'A'.
18	09/06/15 - NYW AMEND SPECIFICATION 3.

Scale:	NTS	THIRD ANGLE	Unstated X XX XXX ANGLES	Tolerances: ± 0.2 ± 0.1 ± 0.05 ± 5	Material SEE NOTE
Drawn:	NYW				
App'd:	XXX	Title	CABLE ASSEMBLY		NOT TO SCALE
Date:	9 JUN '15	Revision:	18		Unit: mm

www.gradconn.com

THIS DRAWING IS CONFIDENTIAL AND MUST NOT BE COPIED OR DISCLOSED WITHOUT WRITTEN CONSENT

Type:	CABLE 055 RF
	CAB055RF
Drawing Number:	Sheet 1 of 1
Drawing	E and O E